

What's New on the Block? Exchanging Ideas about Innovations

J. Aaron Johnson

Hannah K. Knudsen

Paul M. Roman

The University of Georgia

Today's Session

- Provide an overview of the National Treatment Center Study
- Present recent findings from the NTCS
- Facilitate a town hall discussion about treatment innovations

The National Treatment Center Study

- Funded by NIAAA and NIDA
- Nationally representative sample of 400+ private substance abuse treatment centers
- Private centers are defined as receiving greater than 50% of their revenue from fees-for-service (such as self-pay, insurance and managed care payments, Medicaid/Medicare)

Research Design and Aims

- 1995-present: Three completed waves of on-site data collection with center administrators and clinical directors
 - Wave 1 Focus: Organizational Structure and Management
 - Wave 2 Focus: The Impact of Managed Care
 - Wave 3 Focus: The Diffusion of Innovations
 - Upcoming Wave 4 Focus: The Implementation of Innovations

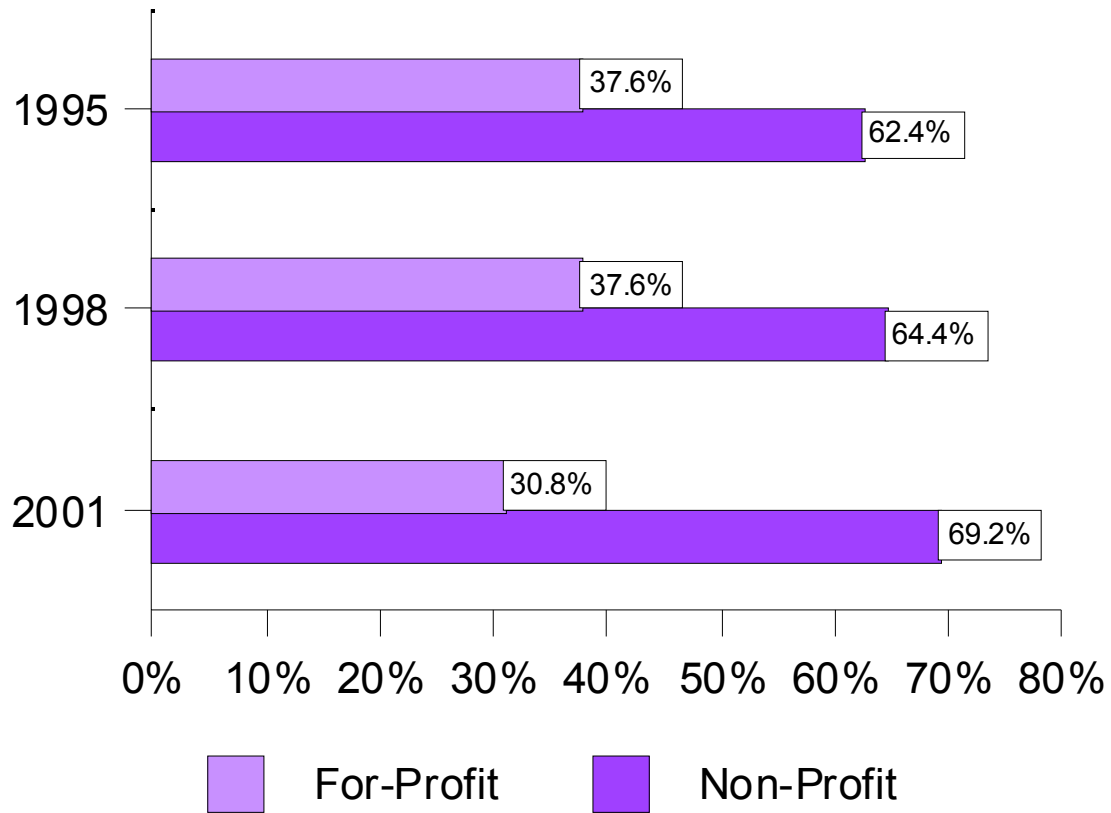
Central Research Questions of Wave 3

- To what extent have private centers adopted treatment innovations?
- What organizational factors are related to the adoption of these innovations?

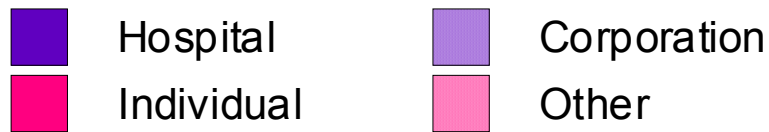
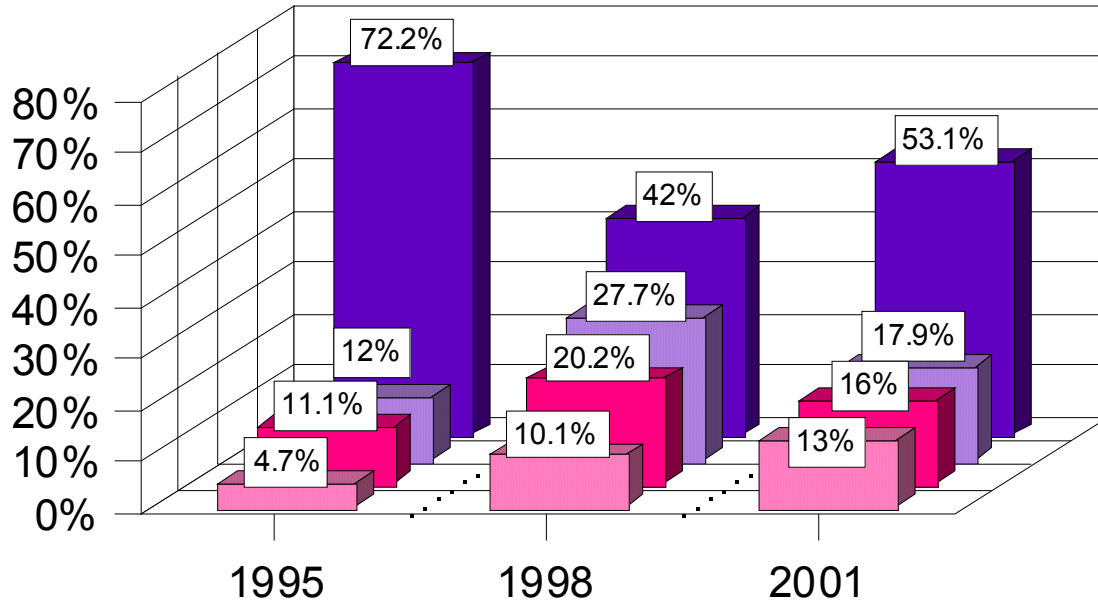
Overview of the NTCS

- Center Characteristics
- Provision of Services
- Funding Sources

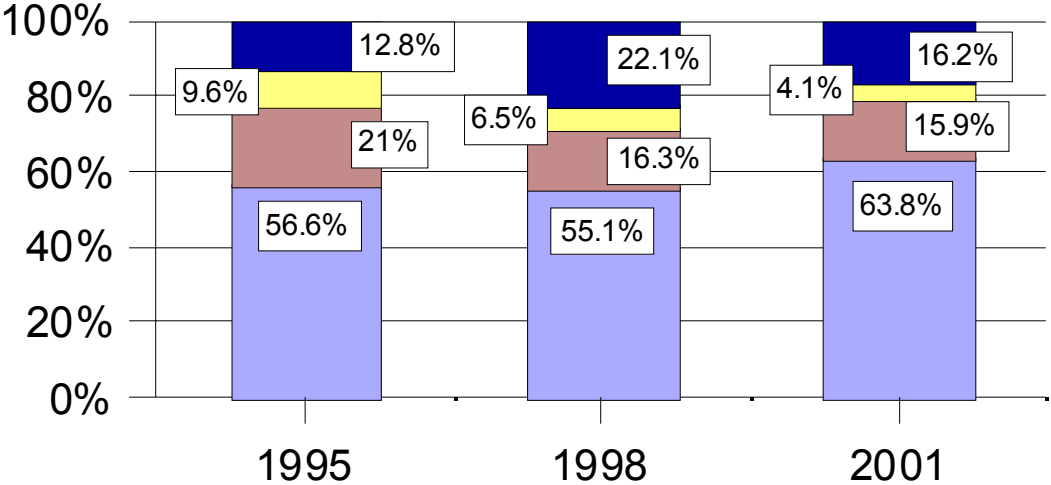
Profit Status



Center Ownership

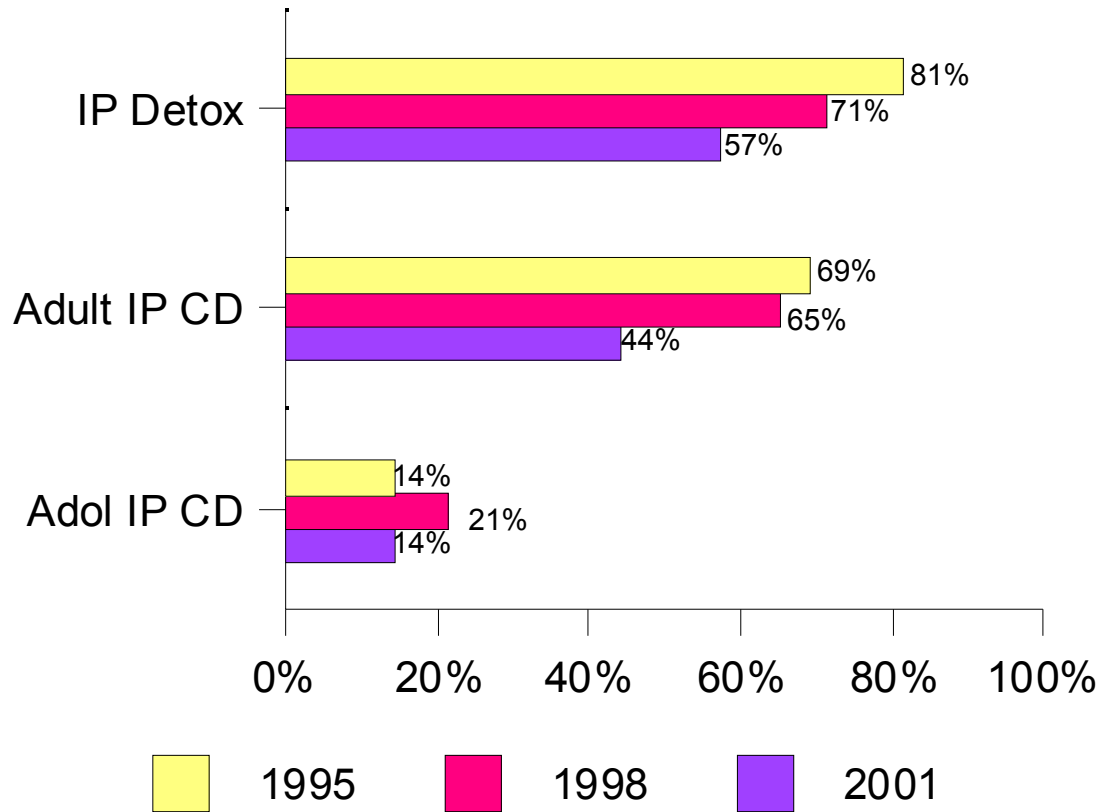


Center Size (in FTEs)

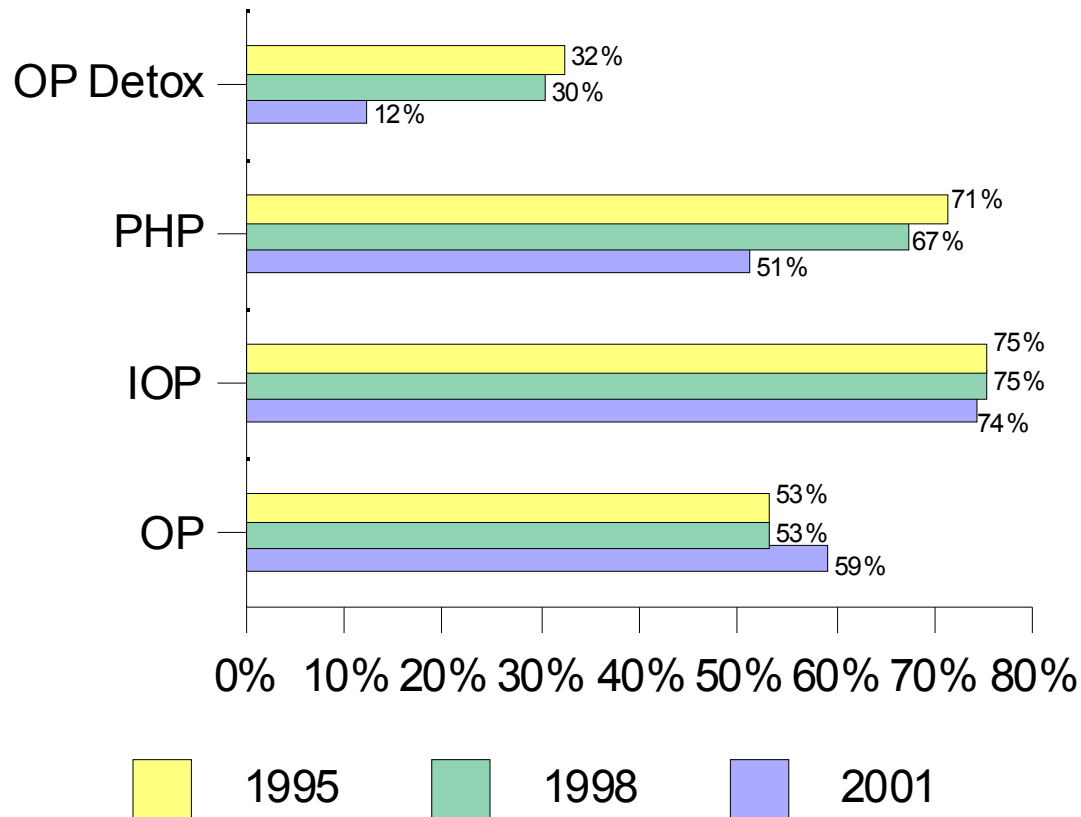


- >75 FTEs
- 51-75 FTEs
- 26-50 FTEs
- 1-25 FTEs

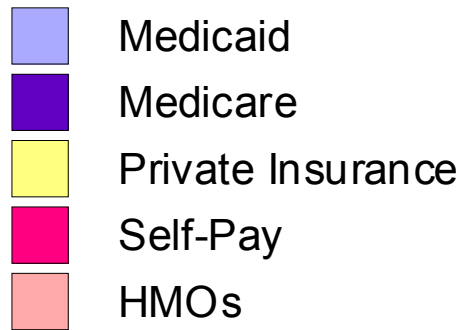
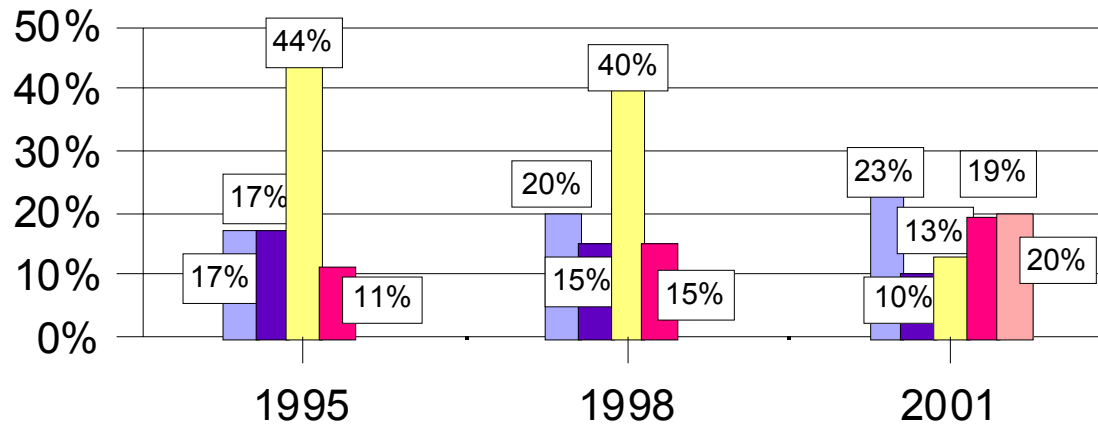
Provision of Inpatient Services



Provision of Outpatient Services



Payer Mix



The Adoption of Treatment

Innovations:

Naltrexone,

Motivational Enhancement Therapy,

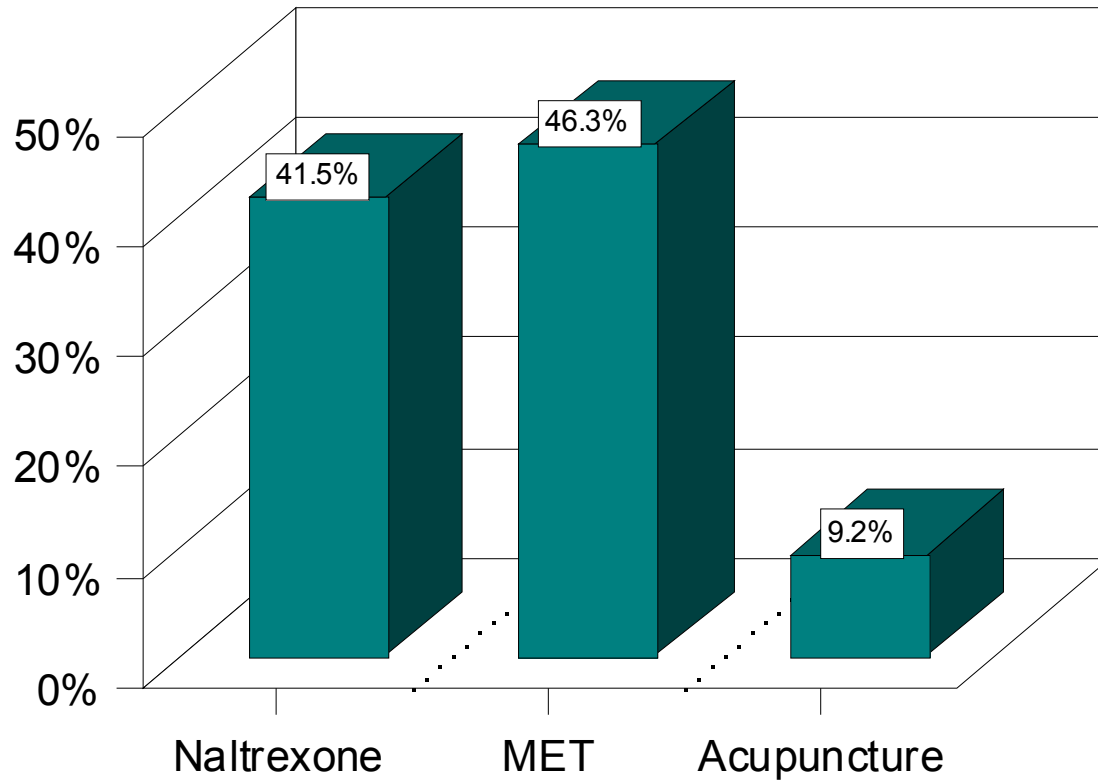
and

Acupuncture

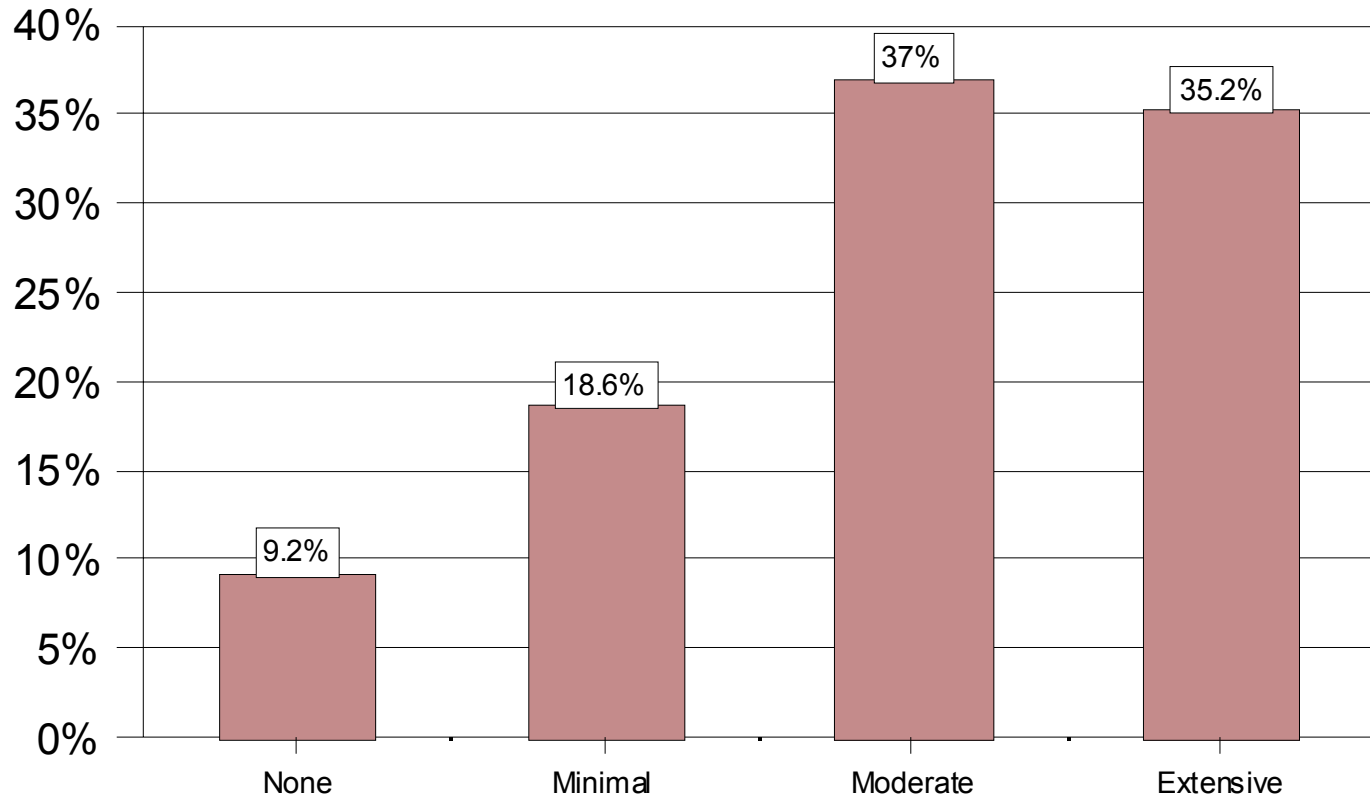
Measures of Treatment Innovations

- Current Use of the Innovation
- Staff Familiarity with the Innovation
- Reasons for Adopting/Not Adopting
 - Consistency with center philosophy
 - Minimal side effects
 - Evidence of clinical effectiveness
 - Cost effectiveness
 - Extent of Use at Comparable Centers
 - Need for alternative to traditional treatment
 - Availability of medical personnel
 - Directive from managed care organizations
 - Staff Resistance

The Adoption of Innovations



Staff Familiarity with Naltrexone



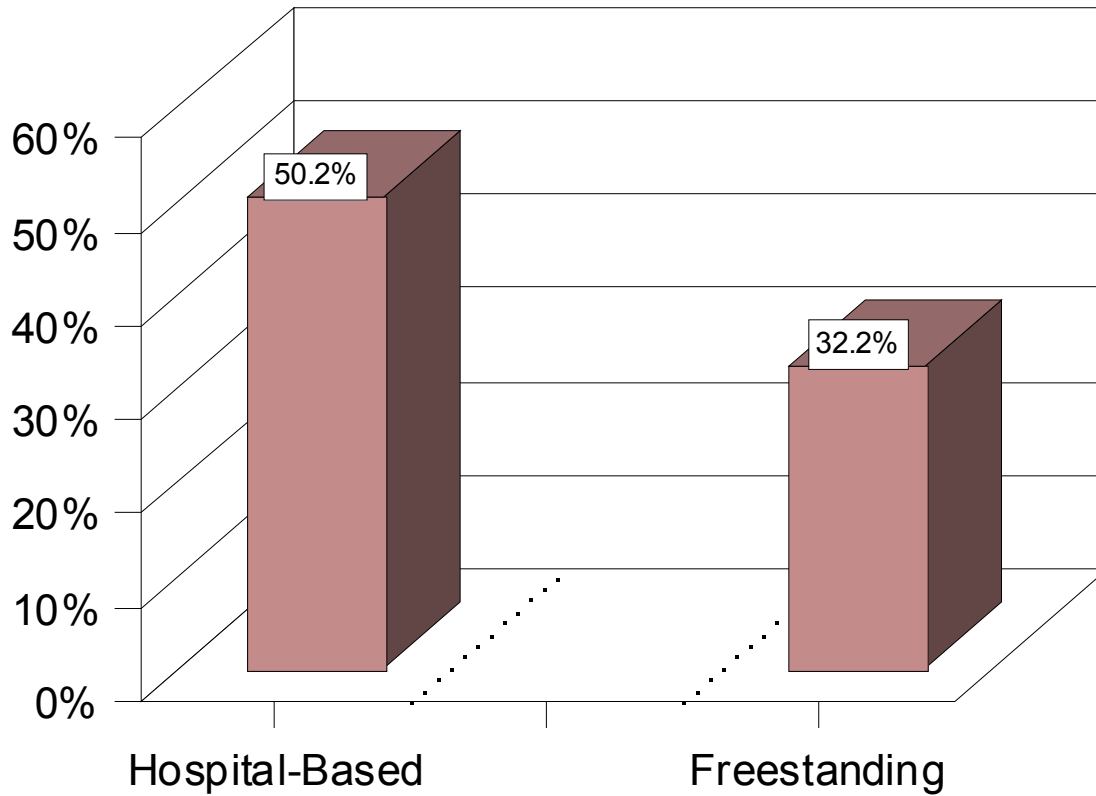
Key Reasons for Adopting Naltrexone

- Evidence of clinical effectiveness
- Consistency with center's philosophy
- Need for alternative to traditional treatment

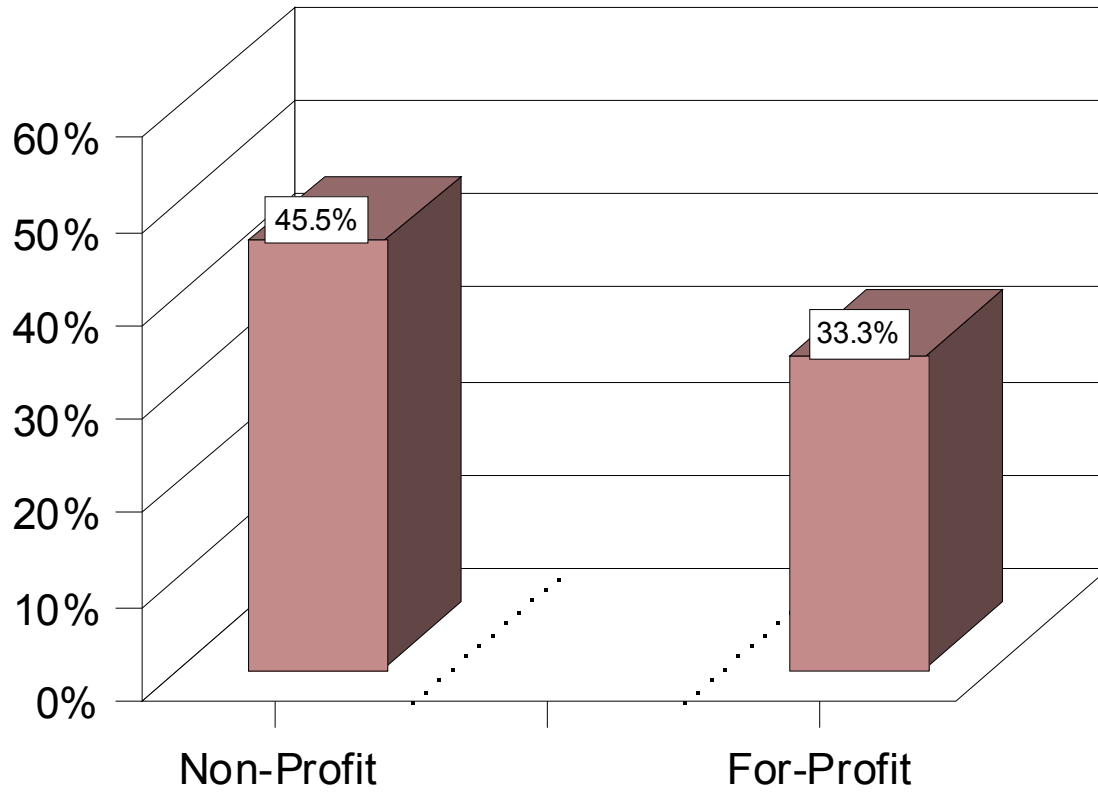
Key Reasons for Not Adopting Naltrexone

- Inconsistent with center's philosophy
- Better alternatives available
- Inadequate access to medical personnel

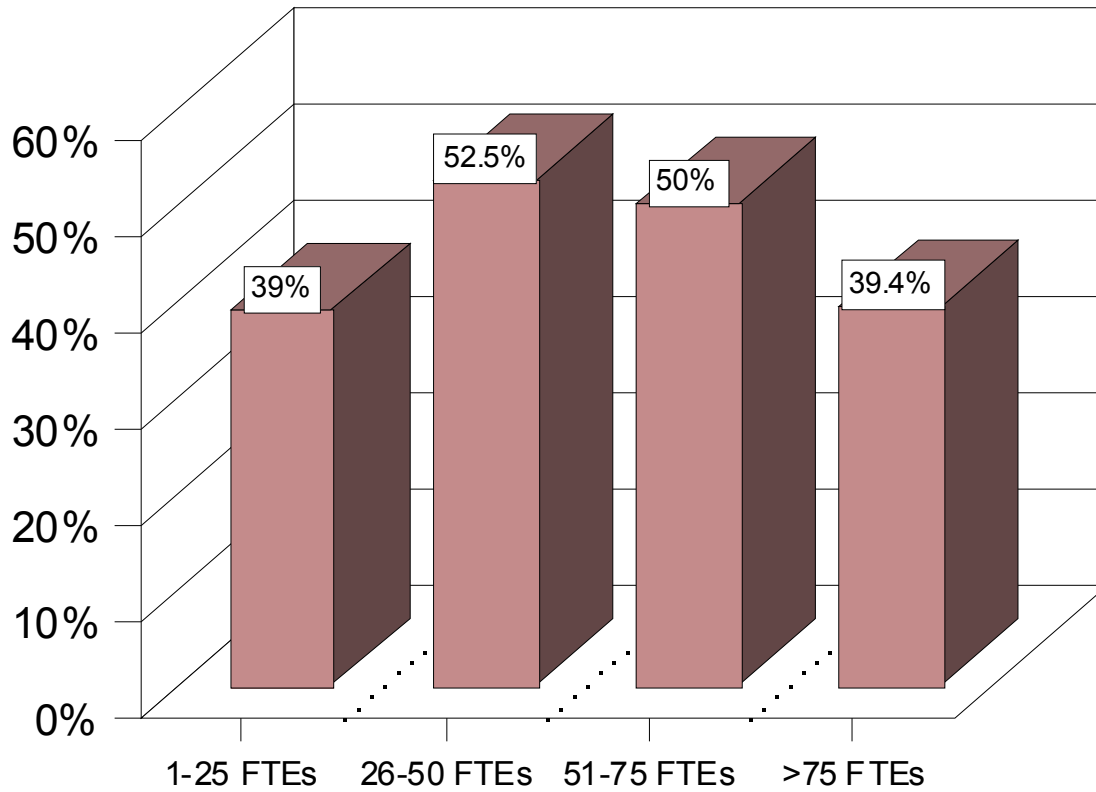
Naltrexone Adoption by Ownership



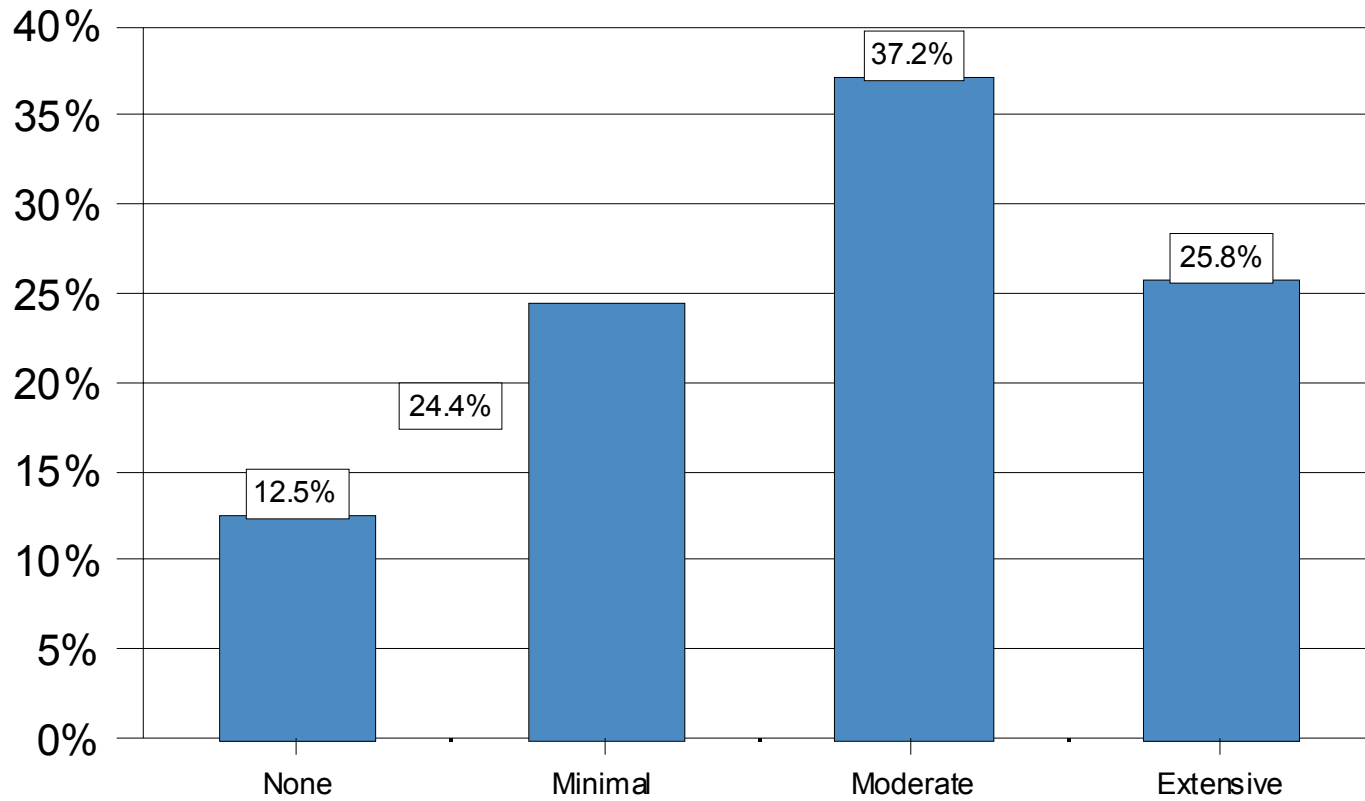
Naltrexone Adoption by Profit Status



Naltrexone Adoption by FTEs



Staff Familiarity with MET



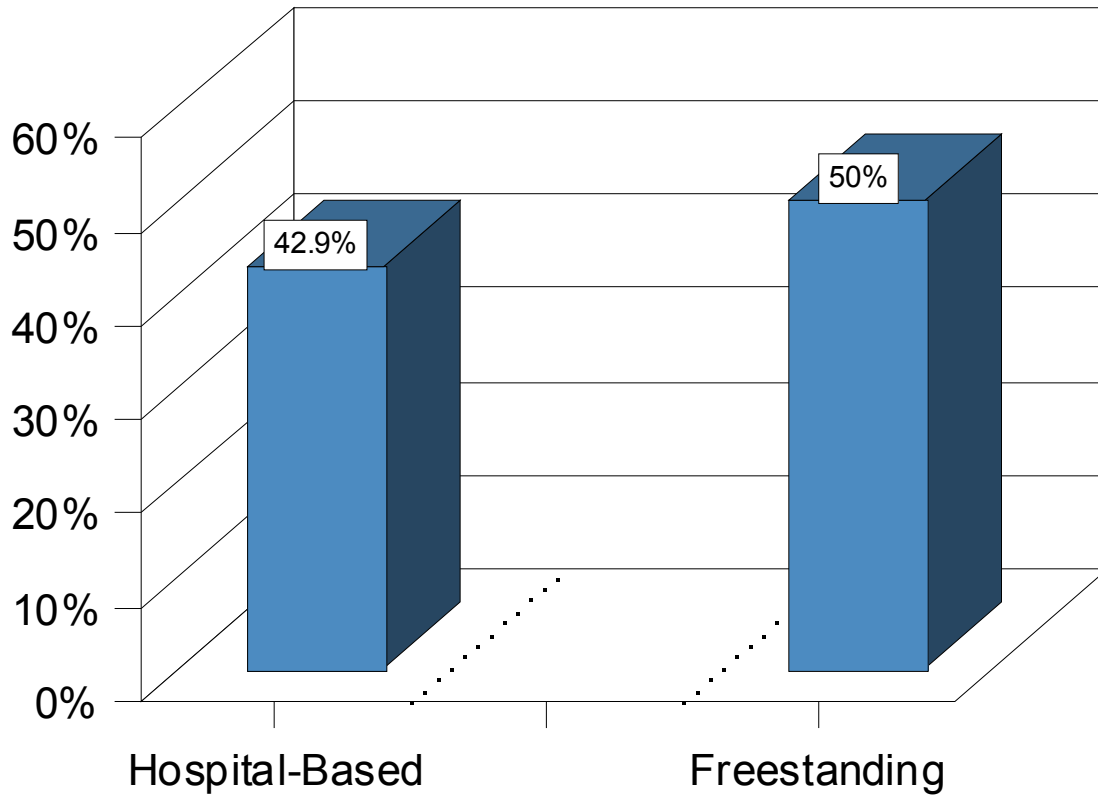
Key Reasons for Adopting MET

- Consistency with center's philosophy
- Evidence of clinical effectiveness
- Minimal side effects

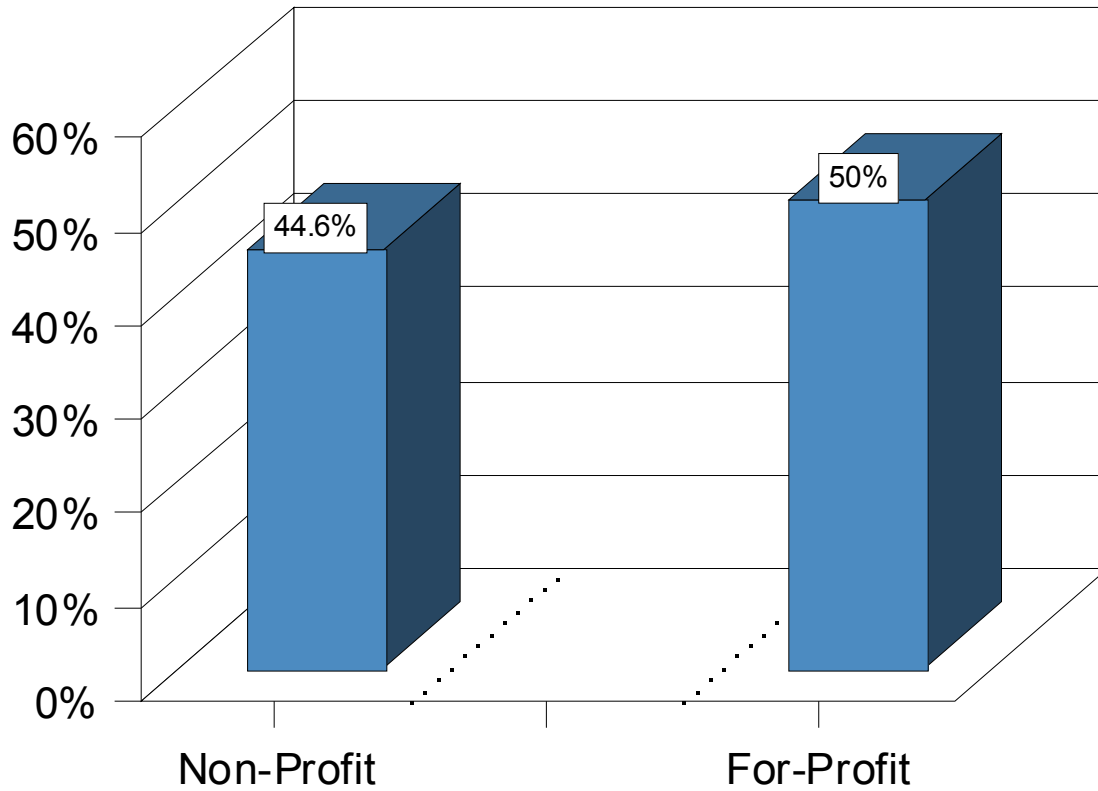
Key Reasons for Not Adopting MET

- Inadequate information about MET
- Inconsistent with center's philosophy
- Better alternatives available

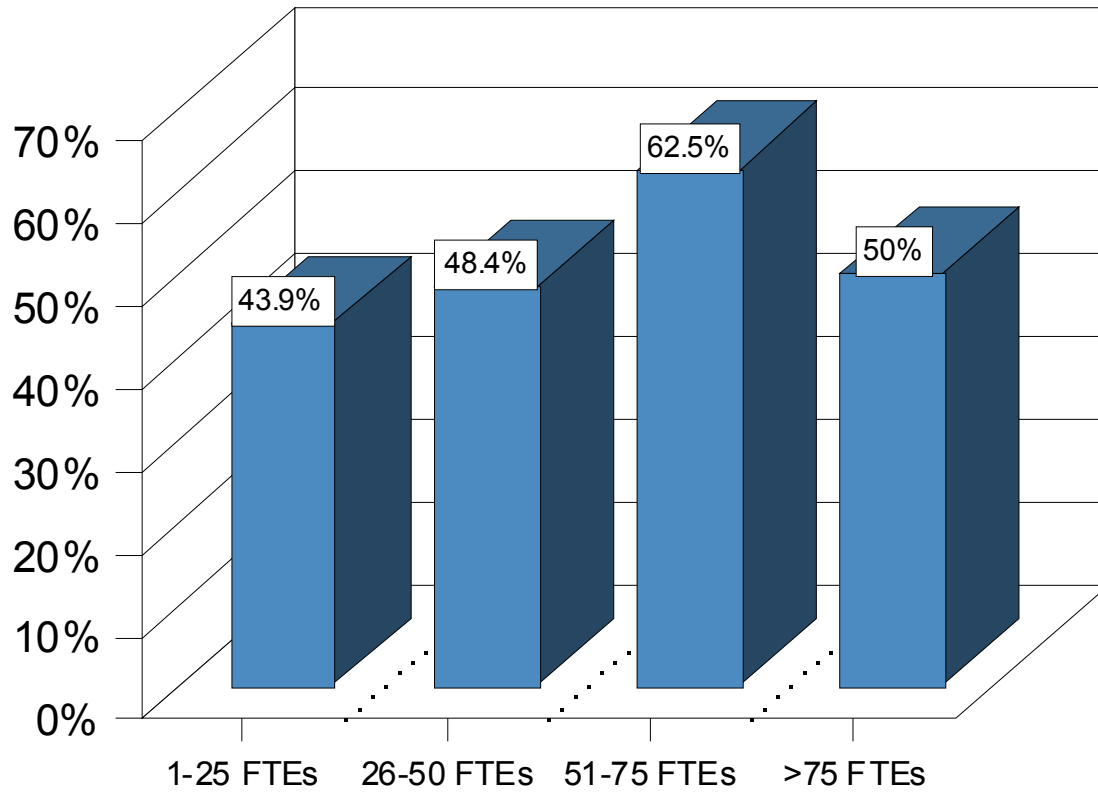
MET Adoption by Ownership



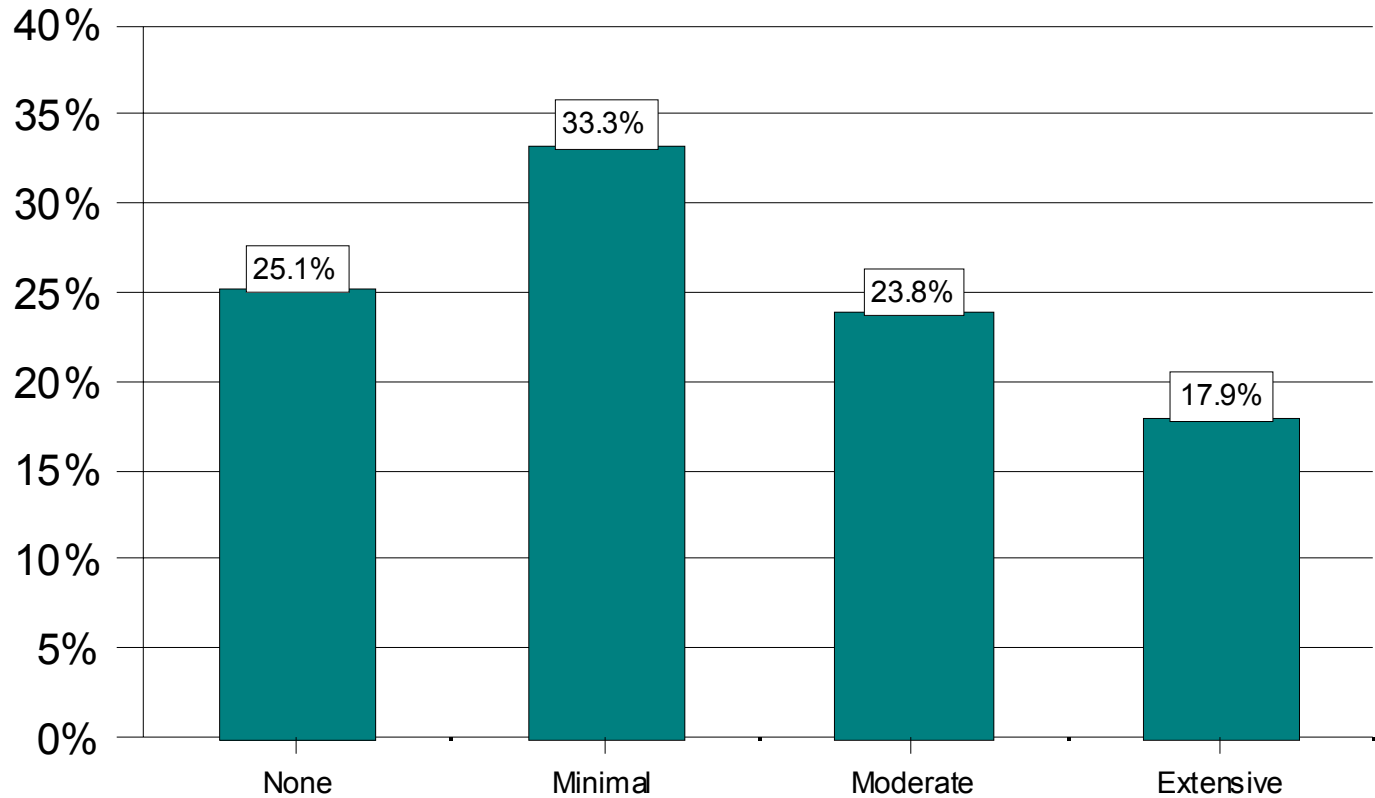
MET Adoption by Profit Status



MET Adoption by FTEs



Staff Familiarity with Acupuncture



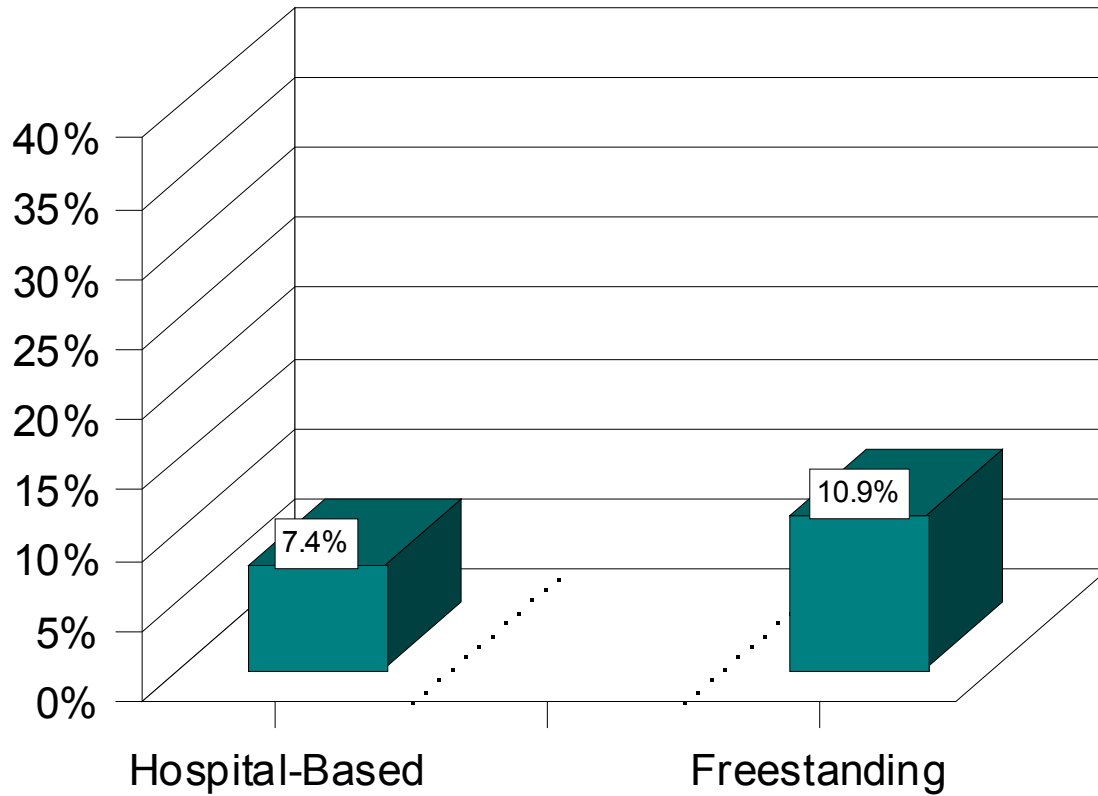
Key Reasons for Adopting Acupuncture

- Consistency with center's philosophy
- Minimal side effects
- Need for alternatives to traditional treatment
- Evidence of clinical effectiveness

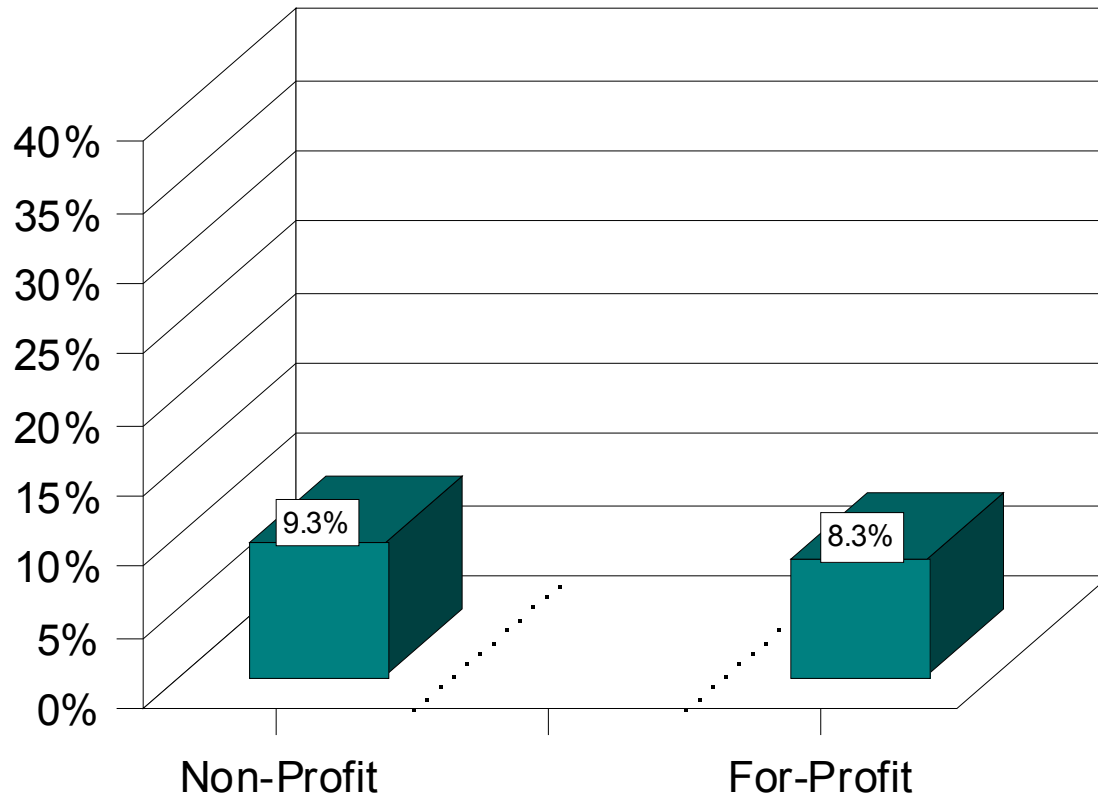
Key Reasons for Not Adopting Acupuncture

- Inadequate access to medical personnel
- Inadequate information about acupuncture
- Lack of evidence of clinical effectiveness

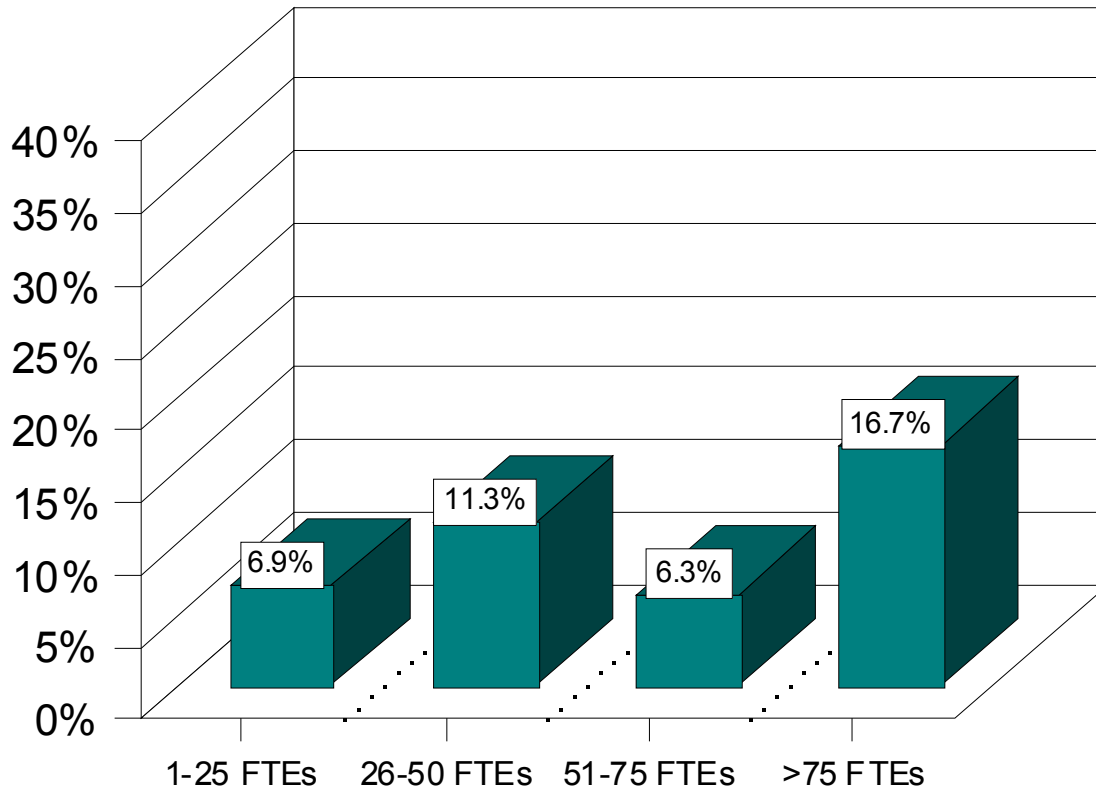
Acupuncture Adoption by Ownership



Acupuncture Adoption by Profit Status



Acupuncture Adoption by FTEs



Exchanging Ideas about Innovations

What do you think are the most important treatment innovations in the last 10 years?

What are some of the barriers to implementing these innovations?

What strategies can treatment centers use to improve the implementation of innovations?

What changes would make
clinicians' work more efficient
and more effective?

Thinking about our upcoming data collection efforts, what new information should we be collecting?